

# Hazardous Location Push Buttons

## Product Selection

### Back-of-Panel Components

#### Latch and Base Mount Contact Block



Base Mount  
Cat. No. 800G-XBA



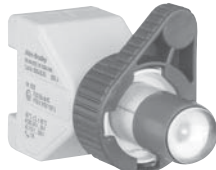
Latch Mount Screw Termination  
Cat. No. 800G-XLSA

Contact	Base Mount		Latch Mount	
	Screw Termination		Screw Termination	Cable Termination
	Cat. No.		Cat. No.	Cat. No.
1 N.O. - 1 N.C.	800G-XBA		800G-XLSA	800G-XLC3A
2 N.O.	800G-XBM		800G-XLSM	800G-XLC3M
2 N.C.	800G-XBN		800G-XLSN	800G-XLC3N

#### Latch Mount and Base Mount Power Module\*



Base Mount  
Cat. No. 800G-DBG



Latch Mount Screw Termination  
Cat. No. 800G-DLSG

Color	Base Mount		Latch Mount	
	Screw Termination		Screw Termination	Cable Termination
	Cat. No.		Cat. No.	Cat. No.
White	800G-DBW		800G-DLSW	800G-DLC3W
Green	800G-DBG		800G-DLSG	800G-DLC3G
Red	800G-DBR		800G-DLSR	800G-DLC3R
Yellow	800G-DBY		800G-DLSY	800G-DLC3Y
Blue	800G-DBB		800G-DLSB	800G-DLC3B

**Note:** Cable termination length is three meters.

#### Power Module with Contact Block\*



Latch Mount  
Cat. No. 800G-DBGXK

Color	Latch Mount	
	1 N.O.	1 N.C.
	Cat. No.	Cat. No.
White	800G-DLSWXK	800G-DLSWXL
Green	<b>800G-DLSGXK</b>	800G-DLSGXL
Red	800G-DLSRXK	800G-DLSRXL
Yellow	800G-DLSYXK	800G-DLSYXL
Blue	800G-DLSBXK	800G-DLSBXL

**Note:** For use with illuminated push button.

### 800G – XLS A

a b  
a

Contact Block/Latch Type	
Code	Description
XB	Base mount
XLS	Latch mount with screw termination
XLC3	Latch mount with 3 m (9.84 ft) cable termination

b

Contact Configuration	
Code	Description
A	1 N.O. - 1 N.C.
M	2 N.O.
N	2 N.C.

### 800G – DB G

a b  
a

Power Module/Latch Type	
Code	Description
DB	Base mount
DLS	Latch mount with screw termination
DLC3	Latch mount with 3 m (9.84 ft) cable termination

b

Color	
Code	Description
W	White
G	Green
R	Red
Y	Yellow
B	Blue

\* Bul. 800G LED modules can only be powered from dry contact circuits (with no leakage current in the OFF state).

### 800G – DB G XK

a b c  
a

Power Module/Latch Type	
Code	Description
DB	Base
DLS	Latch mount with screw termination
DLC3	Latch mount with 3 m (9.84 ft) cable termination

b

Color	
Code	Description
W	White
G	Green
R	Red
Y	Yellow
B	Blue



c

Contact Configuration	
Code	Description
XK	1 N.O.
XL	1 N.C.



\* Bul. 800G LED modules can only be powered from dry contact circuits (with no leakage current in the OFF state).

**Back-of-Panel**

**Contact Block**

Electrical Ratings						
	Screw Termination			Cable Termination		
Rated Insulation Voltage	690V			400V (Limited by the cable, not the contacts)		
Rated Voltage	250V (per ATEX certificates)		24V	250V (per ATEX certificates)		24V
Rated Operating Currents	16 A	10 A	1 A	16 A	10 A	1 A
Utilization Category	AC-12	AC-15	DC-13	AC-12	AC-15	DC-13
Thermal Continuous Current	16 A at 40 °C (104 °F), 11 A at 60 °C (140 °F)			16 A at 40 °C (104 °F), 11 A at 60 °C (140 °F)		
Contact Rating per UL 508	A600		P600	A600		P600
Max. Rated Voltage per UL Contact Rating	600V		600V	600V		600V
Max. "Make" Current at Rated Voltage per UL Contact Rating	12 A		0.2 A	12 A		0.2 A
Max. "Break" Current at Rated Voltage per UL Contact Rating	1.2 A		0.2 A	1.2 A		0.2 A
Thermal Continuous Test Current per UL Contact Rating	10 A		5 A	10 A		5 A
Short Circuit Protection	10 A Slow Blow, Type DT, gl			10 A Slow Blow, Type DT, gl		
Mechanical Ratings						
Protection Type	 II 2G Ex de IIC Class I, Zone 1 AEx de IIC Class I, Zone 1 Ex de IIC			 II 2G Ex d IIC T6 Class I, Zone 1 AEx d IIC T6 Class I, Zone 1 Ex d IIC T6		
Certification	PTB 01 ATEX 1040U UL E10314			PTB 01 ATEX 1039X UL E10314		
Contact Options	1 N.O. - 1 N.C. 2 N.O. 2 N.C.			1 N.O. - 1 N.C. 2 N.O. 2 N.C.		
Contact Material	AgSnO <sub>2</sub>			AgSnO <sub>2</sub>		
Housing Material	Thermoplastic			Thermoplastic		
Physical Shock Resistance	DIN IEC 68 part 2-27, 30 g 18 ms			DIN IEC 68 part 2-27, 30 g 18 ms		
Design Life	1 000 000 cycle mechanical life			1 000 000 cycle mechanical life		
Operating Force (Maximum)	22.2 N (5 lb) to open N.C. 15.6 N (3.5 lb) to close N.O. 28.9 N (6.5 lb) full travel			22.2 N (5 lb) to open N.C. 15.6 N (3.5 lb) to close N.O. 28.9 N (6.5 lb) full travel		
Temperature (Storage/Transport)	-55...+70 °C (-67...+158 °F)			-55...+70 °C (-67...+158 °F)		
Operational Temperature Range	-55...+60 °C (-67...+140 °F)			-55...+60 °C (-67...+140 °F)		
Wire/Cable Size	2.5 mm <sup>2</sup> (12 AWG) stranded max.			3 m (9.8 ft) long cable 4 x 1.5 mm <sup>2</sup> (9.1 mm/0.36 in. OD)		
Degree of Protection	IP20, with operators and enclosure IP66			With operators IP67		
Mounting	Base Mount: Secures to rail integral to enclosure base Panel Mount: Secures to operator with integral latch			Panel Mount: Secures to operator with integral latch		

**Power Module**

Electrical Ratings						
	Screw Termination			Cable Termination		
Rated Insulation Voltage	300V			300V		
Power Consumption	≤ 1 W			≤ 1 W		
Lamp	Multi-LED (Red, Yellow, Green, White, Blue)			Multi-LED (Red, Yellow, Green, White, Blue)		
Rated Voltage	12...60V DC 12...250V AC			24...60V DC 24...60V AC and 110...250V AC		
Mechanical Ratings						
	Screw Termination			Cable Termination		
Protection Type	 II 2G Ex de IIC Class I, Zone 1 AEx de IIC Class I, Zone 1 Ex de IIC			 II 2G Ex d IIC T6 Class I, Zone 1 AEx d IIC T6 Class I, Zone 1 Ex d IIC T6		
Certifications	PTB 01 ATEX 1037U UL E10314			PTB 01 ATEX 1038X UL E10314		
Housing Material	Thermoplastic			Thermoplastic		
Physical Shock Resistance	DIN IEC 68 part 2-27, 30 g, 18 ms			DIN IEC 68 part 2-27, 30 g, 18 ms		
Design Life	100 000 hours			100 000 hours		
Storage/Transport Temperature	-55...+70 °C (-67...+158 °F)			-55...+70 °C (-67...+158 °F)		
Ambient Temperature Range	-55...+60 °C (-67...+140 °F)			-55...+60 °C (-67...+140 °F)		
Wire/Cable Size	2.5 mm <sup>2</sup> (12 AWG) stranded max.			3 m (9.8 ft) long cable 4 x 1.5 mm <sup>2</sup> (9.1 mm/0.36 in. OD)		
Degree of Protection	IP20, with operators and enclosure IP66			With operators IP67		
Mounting	Base Mount: Secures to rail integral to enclosure base Panel Mount: Secures to operator with integral latch			Panel Mount: Secures to operator with integral latch		





# Hazardous Location Push Buttons


## Specifications

### Back-of-Panel, Continued

#### Power Module/Contact Block Combination

Electrical Ratings				
	Screw Termination		Cable Termination	
Rated Insulation Voltage	300V		300V	
Power Consumption	≤ 1 W		≤ 1 W	
Lamp	Multi-LED (red, yellow, green, white, blue)		Multi-LED (red, yellow, green, white, blue)	
Rated Voltage	24...48V DC 24...250V AC		24...48V DC 24...250V AC	
Contact Rating per UL 508	A600	P600	A600	P600
Thermal Continuous Current	1 A	0.25 A	1 A	0.25 A
Max. Rated Voltage	600V	600V	600V	600V
Mechanical Ratings				
	Screw Termination		Cable Termination	
Protection Type	 II 2G EEx de IIC Class I, Zone 1 AEx de IIC Class I, Zone 1 Ex de IIC		 II 2G EEx d IIC T6 Class I, Zone 1 AEx d IIC T6 Class I, Zone 1 Ex d IIC T6	
Certifications	PTB 01 ATEX 1037U UL E10314		PTB 01 ATEX 1038X UL E10314	
Housing Material	Thermoplastic		Thermoplastic	
Physical Shock Resistance	DIN IEC 68 part 2-27, 30 g, 18 ms		DIN IEC 68 part 2-27, 30 g, 18 ms	
Design Life	100 000 hours		100 000 hours	
Storage/Transport Temperature	-55...+70 °C (-67...+158 °F)		-30 ...+70 °C (-22...+158 °F)	
Ambient Temperature Range	-55...+60 °C (-67...+140 °F)		-30...+60 °C (-22...+140 °F)	
Wire/Cable Size	2.5 mm <sup>2</sup> (12 AWG) stranded max.		3 m (9.8 ft) long cable 4 x 1.5 mm <sup>2</sup> (9.1 mm/0.36 in. OD)	
Degree of Protection	IP20, with operators and enclosure IP66		With operators IP67	
Mounting	Base Mount: Secures to rail integral to enclosure base Panel Mount: Secures to operator with integral latch		Panel Mount: Secures to operator with integral latch	

### Front-of-Panel Operators

Mechanical Ratings							
Device	Operational Temperature	Operating Force *	Mechanical Design Life	Impact Resistance	Materials	Ingress Protection	Ex Protection Type
Push Button	-55...+70 °C (-67...+158 °F)	6.7 N (1.5 lb)	1 000 000 cycles	7 N•m	Thermoplastic Housing EPDM Seals	IP66 : -20...+70 °C (-4...+158 °F)	 II 2G EEx e II PTB 01 ATEX 1035U UL E10314
Selector Switch	-55...+70 °C (-67...+158 °F)	—					
Key Release Push Button	-55...+70 °C (-67...+158 °F)	15.6 N (3.5 lb)					
Key Release Mushroom	-55...+70 °C (-67...+158 °F)	15.6 N (3.5 lb)					
Mushroom	-55...+70 °C (-67...+158 °F)	6.7 N (1.5 lb)					
E-Stop	-55...+70 °C (-67...+158 °F)	44.5 N Push/ 89 N Pull (10 lb Push/ 20 lb Pull)	6000 cycles			IP54: -55...-20 °C (-67...-4 °F)	
Pilot Light (Red, Yellow, White, Green, Blue)	-55...+70 °C (-67...+158 °F)	—	N/A	4 N•m		Type 4X: -20...+70 °C (-4...+158 °F)	
Hole Plug	-55...+70 °C (-67...+158 °F)	—	N/A	7 N•m			
Illuminated Push Button	-55...+70 °C (-67...+158 °F)	6.7 N (1.5 lb)	1 x 10 <sup>6</sup>	7 N•m			
Key Selector Switch	-55...+70 °C (-67...+158 °F)	—	1 000 000 cycles	7 N•m			

\* Does not include contact block.